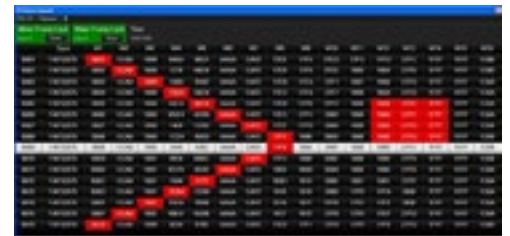


## Telemetry Data System

**CPAS-5030**, is a fully compliant IRIG106 Chapter 10 PCM **Telemetry Data System (TDS)**. As part of our **Chapter 10 Products, Applications and Solutions (CPAS) family** the **CPAS-5030** provides real-time telemetry data processing, display, recording, reproduction and distribution.

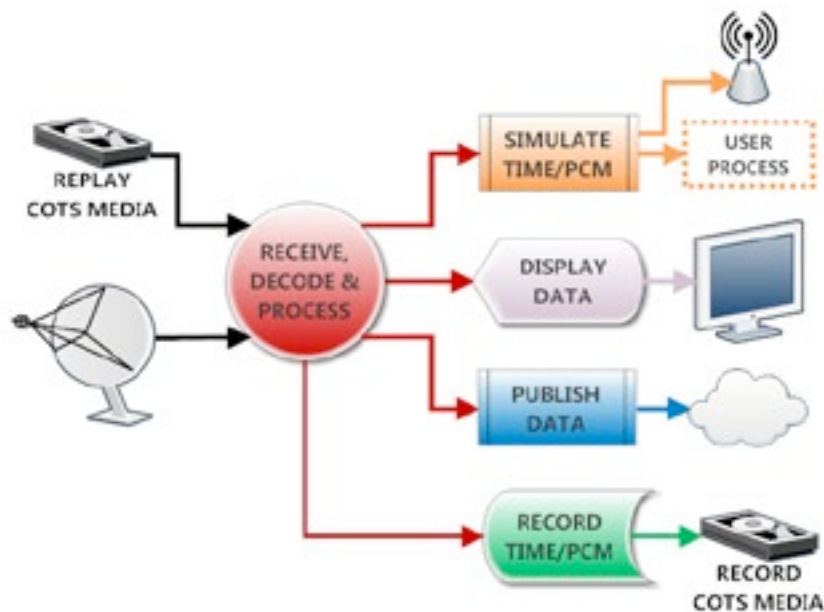
The **CPAS-5030** receives real-time PCM inputs and **NetView** software provides the processing, display, record and reproduction functions. Network data streaming transport IAW IRIG 106 Chapter 10 is also provided which **NetView** clients can process and display the data.



- 2 or 4 PCM Input Channels, Fully Independent, 20Mbps each
- 2 or 4 PCM Output Channels, Fully Independent, 20Mbps each
- **NetView** Telemetry Data Processing Software
- Internal GPS Receiver & IRIG-A/B/G Time Code Generator
- 1-6 Removable Drives (Disk or Solid State)
- IEEE-1394B Firewire IRIG 106 Chapter 10 RMM Interfaces
- Optional AIT or LTO SCSI Tape Drive
- Optional Bit Synchronizers, 20Mbps Per Channel

## Telemetry Data System Features

- **PCM Inputs/Outputs**
  - 20Mbps Per Channel, Fully Independent
  - TTL TTL (BNC), Optional RS-422 (Triax)
  - 75Ω Termination, Others Available
  - NRZ-L/M/S, BIO-L/M/S, RNRZ-L
  - De-Randomize, Invert Data/Clock
  - Internal (Output to Input) Loopback
- **IRIG Time Inputs/Outputs**
  - IRIG-A/B/G Per Input (AM or DC)
  - IRIG-A/B/G Time Code Generator
  - TCG Seed – External IRIG or Internal GPS
  - Internal (Output to Input) Loopback
- **GPS Receiver**
  - NMEA 0183 & 1PPS (30nS) Outputs
- **Optional Bit Sync**
  - (2) or (4) Channels @ 20Mbps Each
  - De-Randomizer 9/11/15/17/23 Bit
  - NRZ-L/M/S, BIO-L/M/S, DM-M/S
- **Chapter 10 Record/Reproduce/Publish**
  - High Stability RTC
  - ± 1μ Second Time Tagging/Alignment
  - Throughput, Packed, Unpacked PCM
  - 16 or 32 Bit PCM Alignments
  - Selectable Sync Strategy
  - Fully Independent Record & Reproduce
  - IRIG-A/B/G or GPS UTC Time Packets
  - Full Chapter 6 Dot Command Support
  - Remote Command/Control



### Ordering Information

- **TDS-2-2:** 2 PCM Input & 2 PCM Output Channels
- **TDS-4-4:** 4 PCM Input & 4 PCM Output Channels
- **\*BS-1:** 2 or 4 Channels Digital Bit Sync, Mezzanine Card, 20Mbps
- **\*SSD-1:** Solid State Removable Drives (Specify Required Capacity)
- **ATD-1:** AIT Tape Drive
- **LTD-1:** LTO Tape Drive